



Summer Holiday Programme

JANUARY 2025



**A GREAT GIFT IDEA-
SIGN SOMEONE UP FOR
ONE OF OUR ACTIVITIES**

**ILLUSTRATED BY
EMMA EVANGELINE GUSTAFSON**

KIWI NIGHT ADVENTURE

COST:

Child \$10, Adult \$15

WHEN+WHERE:

January 3rd, 6th, 11th, 14th, 17th, 23rd
– 7.30pm

Port Charles Fire Station

Explore the forest at nighttime in real kiwi country. Hear kiwi call and see a kiwi burrow. Follow a beautiful stream and see glow worms. Learn about our national bird and the work MEG is doing. Bring a torch and sturdy shoes. Please be mindful to bring clean, dirt free shoes to protect kauri. **Children must be accompanied by an adult.**



PAINT A RAT BOX

COST:

\$25 per box, paint provided.

WHEN+WHERE:

January 4th & 15th – 9am

Waikawau Bay Campground, MEG Shop

Create a cool-as wooden trap box and take it home for your own backyard or as a gift. Bring ideas for patterns, text, silhouettes. **Children must be accompanied by an adult.**

*includes trap box, trap and materials.



LONG BAY GUIDED WALK

COST:

Child \$5, Adult \$10

WHEN+WHERE:

January 7th & 19th – 10am

Long Bay Campsite boat ramp area

Join one of our volunteer guides to explore the Long Bay coastal walk. Learn more about our beautiful New Zealand forest and sea life and encounter a giant kauri 1200 years old. **Children under 12 must be accompanied by an adult.**

D.O.C RANGER NOCTURNAL WALK

COST: Child \$5, Adult \$10

WHEN+WHERE:

January 7th, 16th – 8pm

Waikawau DOC campground MEG shop

Come on and wander in the dark with a DOC park ranger! You will be taken on a nighttime tour of Waikawau native bush and streams and find out who comes out at night on land and water.

Children under 12 must be accompanied by an adult. Wear suitable footwear and clothing. Bring a torch.



CLAY CRITTERS

COST: Child \$5, accompanying adult free Max per family \$20

WHEN+WHERE:

January 5th, 8th, 17th – 10am

Coromandel TOP 10 Shelly Beach Holiday Park

January 9th – 10am

Colville Community Hall

Get your hands dirty with clay from Driving Creek Railway and create some critters that you can take home with you as a memento. Animals of all shapes and sizes live in Aotearoa. Come and squish, roll and enjoy the smooth texture of clay. A great activity for the little ones. **Children must be accompanied by an adult.**



MEET A WĒTĀ CONSERVATION TOUR AT DRIVING CREEK RAILWAY

COST:

Adults \$10 Children \$5

WHEN+WHERE:

January 6th – 10am

Driving Creek Railway car park

Join young ranger and nature enthusiast Luke McCaughy for an exciting walk through the Driving Creek Conservation Park. Luke will guide you on a fascinating journey, introducing you to some of New Zealand's most unique creatures, including wētā and geckos, up close and personal. Learn about predator trapping efforts, native species, edible plants and even venture into an old goldmine.



PROTECT KAURI

Before and after venturing in and out of the bush be sure to clean your boots to protect kauri from the kauri dieback disease caused by a soil-borne pathogen called Phytophthora agathidicida (PA) which is incurable and fatal for kauri.

KAURI POU KAITIAKI VIRTUAL REALITY EXPERIENCE

COST: Koha

WHEN+WHERE:

January 9th – 1pm - 3pm continuously

Colville Community Hall

13th, 14th, 15th continuously
– 10am - 3pm

Hauraki House Gallery

January 21st – 10am - 12pm

Papa Aroha Fire Station

Come and learn about our mighty kauri forests and what you can do to protect them;

- try Kauri Pou Kaitiaki; a 360-degree virtual reality experience that illuminates the cultural, spiritual and ecological significance of our kauri forests, and play an interactive game where you need to try and clean all of the dirt off your shoes.

PHENOMENAL FLORA ART CLASS

COST: \$25 Age 10 to adult

WHEN+WHERE:

January 10th – 10am - 12pm

Papa Aroha Fire Station

A local landscape artist June Maconaghie will teach you how to draw and paint native plants. You will leave with your very own canvas to hang at home. All materials supplied.



Great
Christmas Gift

LEARN BACKYARD TRAPPING

COST: Free

WHEN+WHERE:

January 14th – 10am - 12pm

Hauraki House

Learn how to set the different kinds of traps that are currently being used in the field to catch rats, stoats, ferrets, possums and feral cats. Learn about the different lures and the best placement for your traps.

MEG builds rat, stoat and ferret traps and these will be available to purchase at this event.

Ask us about MEG's operations and how you can get involved.

NATURE ART EXHIBITION

COST: Koha

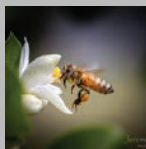
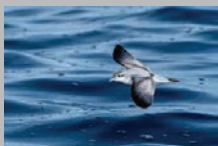
WHEN+WHERE:

January 13th, 14th, 15th – 10am - 3pm

Hauraki House Gallery

Come and experience some beautiful artwork and images that celebrate nature. This year we have the beautiful work of June Maconaghie, local landscape artist, as well as the amazing images of two nature photographers, Anna Sephton and Jeremy Scott. Some of their works will be for sale.

What a wonderful gift to give someone.



MOEHAU ENVIRONMENT GROUP CONSERVATION EVENT

January 13th, 14th, 15th

Three days of displays, activities, giveaways and more.
You could be in to win a family pass to Driving Creek Railway just by attending!

DAY ONE

COST: Koha

WHEN+WHERE: January 13th – 10am - 3pm Hauraki House

Be inspired by nature ! We will have natural history items on display, a conservation story corner, kauri virtual reality experience, films, art exhibition and more.

DAY TWO

COST: Koha

WHEN+WHERE: January 14th – 10am - 3pm Hauraki House

Our displays and activities continue as well as the opportunity to learn to set the different types of traps that are currently being used in the field to catch rats, stoats, ferrets, possums and feral cats. Traps will be available for purchase.

DAY THREE

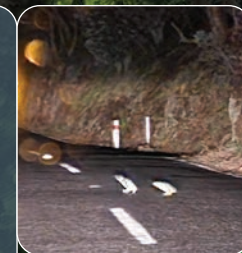
COST: Koha

WHEN+WHERE: January 15th – 10am - 3pm Hauraki House

Koro the kiwi joins the fun today! Koro will be reading to children from 10am to 12pm. Have your photo taken with Koro wearing a kiwi chick costume [ages 3 to 5]. See natural history items, kiwi eggs, walk through a kauri forest using virtual reality, nature themed art exhibition. We will also have Department of Conservation Rangers there to give all kinds of information.

CAUTION AT NIGHT

Some of our rarest bird species are ones that are nocturnal and come out at nighttime. Please be careful when driving on our roads, especially at night. Kororā / little blue penguin, kiwi and pāteke / brown teal are all nocturnal birds with the matuku/ Australasian bittern being partially nocturnal. A common defence for birds when faced with danger is to freeze as they try to camouflage.



SPACE FOR SHOREBIRDS

Our shorebirds such as the tūturiwhatu/ dotterel and oyster catchers have had a hard few years with the storm surges and bad weather the peninsula has experienced. Please respect their right to be on the beaches too. Give them plenty of space, ensure your dog is on lead and refrain from driving on beaches.

BOOKINGS & CANCELLATIONS

Bookings are essential as some of our activities may not run without a minimum number of people. To book either message us on FB or email at moehauenvironmentgroup@gmail.com . You will be sent details of our bank account. The weather may impact the ability to run certain activities. Check our Facebook page for updates. In the case of cancellations you will be notified and refunds will be made to your account.

IMAGES

We may take photos during our activities for future promotion opportunities. If you do not want your image used please make this known at time of booking and to the activity leader. Thank you.

A WORD ABOUT SAFETY

Most of the Summer Holiday Programme takes place outdoors. Common hazards are steep and uneven terrain and exposure to sun and the heat.

While we at MEG will take all reasonably practicable steps to keep you safe, we require participants in the Summer Holiday Programme to take some responsibility. Please ensure you/ and your child/ren wear suitable clean footwear, apply sunscreen, wear suitable clothing and insect repellent. Please bring drinking water. We require all participants to follow any instructions provided by our MEG team so that we can all enjoy these activities.

THINGS TO DO THIS SUMMER

Wander through regenerating forest thriving with rare and endangered wildlife, hear kiwi call at night and have an unforgettable encounter with nature these holidays. This programme offers you the chance to experience and enjoy Coromandel's natural treasures guided by local volunteers keen to share their passion and knowledge.

The Summer Programme is organised by Moehau Environment Group (MEG). We look forward to a fun summer and meeting you soon. If you want to learn more about us head to www.meg.org.nz

VOLUNTEER WITH US

How would you like to be a regular volunteer trapper? You could be part of the great efforts of MEG and our partners to protect our wildlife and plant life. Get out and about in the beautiful northern Coromandel. You would accompany an experienced trapline volunteer to find out firsthand, what its all about.

info@meg.org.nz or message us on
facebook Moehau Environment Group

moehau
environment
group

KEY DATES: JAN 2025

- 3rd** Kiwi night adventure - Port Charles Fire Station
- 4th** Paint a rat box - Waikawau
- 5th** Clay critters - Shelly Beach
- 6th** Conservation Tour - Driving Creek
- 6th** Kiwi night adventure - Port Charles Fire Station
- 7th** Long Bay guided walk - Coromandel Town
- 7th** Nocturnal DOC ranger walk - Waikawau
- 8th** Clay Critters - Shelly Beach
- 9th** Clay Critters - Colville Hall am
- 9th** Kauri Virtual Reality - Colville Hall pm
- 10th** Phenomenal Flora Art Class - Papa Aroha Fire station
- 11th** Kiwi night adventure - Port Charles Fire Station
- 13th** MEG Conservation Event - Hauraki House
- 14th** MEG Conservation Event; Learn Backyard Trapping - Hauraki House
- 14th** Kiwi night adventure - Port Charles Fire Station
- 15th** MEG Conservation Event
- 15th** Paint a Rat Box - Waikawau
- 16th** Nocturnal DOC ranger walk - Waikawau
- 17th** Clay Critters - Shelly Beach
- 17th** Kiwi night adventure - Port Charles Fire Station
- 19th** Long Bay guided walk - Coromandel Town
- 21st** Kauri Virtual Reality - Papa Aroha Fire Station
- 23rd** Kiwi Night Adventure - Port Charles fire station

Illustrated by Emma Evangeline Gustafson.

Check out her beautiful paintings at <https://emmaevangeline.shop/>

EG



moehau
environment
group

A BIG THANKS TO.....

This Summer Programme is organised by Moehau Environment Group Volunteers and for some events we work in partnership with the Department of Conservation, Driving Creek Railway, Colville Junction, Shelly Beach Top 10 Holiday Park. Our work would not be possible without the support of Waikato Regional Council.

We can't do this without our sponsors support. Please support them when you can and enjoy a safe and fun summer with us and our amazing volunteers who make this programme possible.

Contact us if you want to become a MEG corporate sponsor!



We are grateful to Print House (our print sponsor)...
Print House Ltd is committed to sustainability and the protection for the environment.
This booklet is printed using Forest Stewardship Council certified paper.