



ISSUE 2 • 2020

THE MEG-A-PHONE

A Newsletter from Moehau Environment Group

FREE!
PLEASE TAKE
ONE

Gateway Work Placement with Coromandel Area School

MEG are super thrilled to be working in collaboration with Coromandel Area School, providing a placement for a student in the Gateway Work Placement Programme.

Gateway allows students to experience a workplace in the real world, customise their learning to meet their needs, develop life skills, build links in the community and enables them to try out potential career options.

In September Te Rua was interviewed by the MEG team. Through the interview we found out that Te Rua loved to spend time in the bush and was super fit – definitely two requirements to work here! Te Rua had his first day with MEG the week prior to the school

holidays. He went through an orientation, going over the Health & Safety plan and other work protocols and then spent some time in the field with our Op's Manager checking traps on the Matamataharakeke line in Waikawau Bay.



**COROMANDEL
AREA SCHOOL**



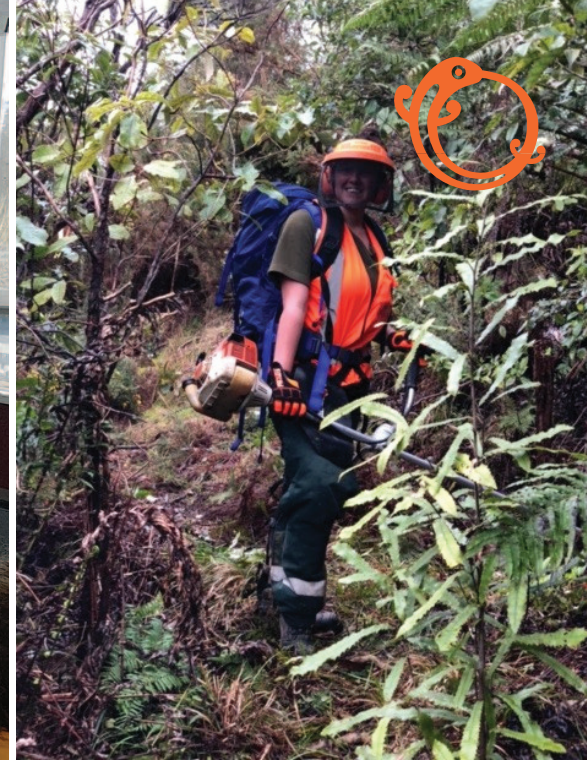
This issue:

Gateway Work
Placement Programme
PAGE 01

NZ Conservation Week
2020
PAGE 02

A Day with Colville
School
PAGE 03

What's that Weed?
Catch Data, Sponsor a
Trap, Become a
Corporate Sponsor
PAGE 04



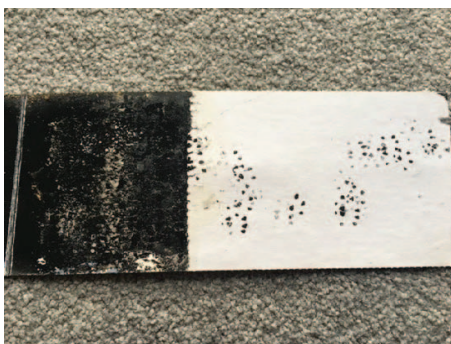
NZ Conservation Week 2020

Phew, what a busy Conservation Week we had this year! We kicked it off with a great turnout at our 'Ginger Bash' - 18 volunteers turned out, including Green Party Coromandel electorate candidate Pamela Grealey, to do their bit to eradicate wild ginger from the area we are currently working on. It's the second bash we've held in this area and it was awesome to see the results from the 1st session as we walked through. We visited 2 classes at Coromandel Area School to introduce the children to some of the predators that wreak havoc on our native species. The following day we visited again to discuss the who, how and why of monitoring a species. After some time studying different foot prints we played a little game using old tracking tunnel cards to see how good we were at matching the footprints to the species. Then the best bit - everyone got to make a tracking tunnel to take home and do some monitoring in their backyard.

Later in the week our MEG field team and some volunteers got together to do some track clearing on one of our CKP trap lines.

**CONSERVATION IS
HUMANITY CARING
FOR THE FUTURE**

- NANCY NEWHALL



Photos: Top L, MEG Engagement Manager, Nat, with our furry teaching tools. Top R, MEG Field Team member ready to cut tracks with volunteers. Bottom L, Rat prints on a tracking card. Middle, Nat helping some students with cutting out their tunnel. R, Green Party Coromandel candidate, Pam, came along to our ginger bash.



Trees, Weeds and Rat Traps with Colville School

THE BEST TIME TO
PLANT A TREE WAS
20 YEARS AGO.
THE NEXT BEST TIME
IS NOW!

- CHINESE PROVERB



Towards the end of August we headed out with Colville School senior students for a building, planting, weeding day. The day started with an in depth lesson in rat box building from our resident trap building guru, Terry. The kids quickly got to work helping Terry to build some of the 1250 new boxes we need to extend our Rat Attack Project area. There are some budding carpenters in that bunch of kids and quite a few of them thought that Terry had THE BEST JOB, until we told them that he's a volunteer and doesn't get paid! MEG and Coville School have collectively been planting a childrens forest in the reserve on the northern end of Waikawau Beach for well over 12 years. Most years we plant up to 200 trees. This year however we just needed to fill in some gaps before we move onto a second stage of planting. Armed with 50 natives from Colville Harbour Care Nursery the kids made short work of planting which gave us heaps of time to do some weeding/releasing around the trees from previous years.



Photos: Top L, Colville School student Annie with her completed rat box. Top R, Everyone gets a lesson in tree planting from MEG Operations Manager Paul. Bottom L, Colville Student Natalia with her native tree. Middle, MEG Field Team member, Emily, enjoying some time in the 'class room'. R, Colville School senior students with their stack of traps...

What's that Weed..?



A weed is a plant considered undesirable in a particular situation, ie plant species that has been introduced to NZ and now competes with and/or displaces our native species. Many weeds attack our ecosystems but one which closely resembles the native toetoe is among the most insidious. Pampas, the prolific-seeding native of South America, invades disturbed areas, such as cleared bush margins, burned areas and firebreaks. It competes with and smothers other vegetation, and provides habitat for rats and mice. Confused between pampas and toetoe? If it's prolific and very fluffy, it's pampas! Pull any small plants you see, larger plants will require treatment with an appropriate herbicide. Replant treated areas with toetoe or harakeke to shade out any new seedlings that may sprout.

Catch Data For Target Species



Stoat
2020 Total - 157
Project Total - 2567



Weasel
2020 Total - 38
Project Total - 959



Rat
2020 Total - 1,405
Project Total - 18,897

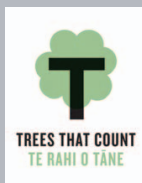


Ferret
2020 Total - 3
Project Total - 8

Sponsor a Stoat Trap

Would you like to sponsor a stoat trap within our kiwi sanctuary? Well you can! For just \$65 per year you can help provide protection for kiwi chicks in the wild. You'll receive a certificate, a map showing the location of your trap and the catch data for the sponsorship year. Not to mention lots of warm fuzzies!

Thanks to our Volunteers, Members, Sponsors & Funding Partners...



Tangiaro Kiwi Retreat
Pepper Tree Restaurant & Bar
Richardsons Real Estate Coromandel
Coromandel Adventures
Coromandel Four Square
Coromandel E Bikes
Long Bay Camp Ground
Star & Garter
Driving Creek Railway & Pottery
Driving Creek Conservation Park
Four Square Coromandel
Coromandel Top 10

Contact us...

email: info@meg.org.nz
www.meg.org.nz
or find us on Facebook

