



# SUMMER HOLIDAY PROGRAMME

## JANUARY 2016

EXPLORE NATURE  
FUN ACTIVITIES  
FOR THE WHOLE FAMILY

ALL PROFIT GOES TO KIWI  
PROTECTION ON THE  
COROMANDEL

FOR BOOKINGS CALL:  
07 866 6903

OR VISIT:  
COROMANDEL INFO CENTRE

[www.meg.org.nz](http://www.meg.org.nz)

## BOOKINGS...

are essential as some activities have restricted numbers or may not run without a minimum number of people.

### TO BOOK CALL...

**07 8666903**

For Waikawau Bay activities, campers can book at the DOC camp office.

*Keep kauri standing.  
Our ancient kauri  
forests are dying from  
kauri dieback disease.  
Always stay on the track  
and clean your boots  
with disinfectant before  
going bush.*



## THINGS TO DO THIS SUMMER




Wander through regenerating forest thriving with rare and endangered wildlife, hear kiwi call each night and have an unforgettable encounter with nature these holidays. This programme offers you the chance to experience and enjoy Coromandel's natural treasures guided by local volunteers keen to share their passion and knowledge.

The Summer Programme is organised by Moehau Environment Group (MEG). We look forward to a fun summer and meeting you soon. If you want to learn more about us head to [meg.org.nz](http://meg.org.nz)

### WHAT DO THESE SYMBOLS MEAN?

- H** Half day
- F** Full day
- E** Evening
- LD** Bring lunch & drink
- SD** Bring snacks & drink
- C** School children
- A** Adult

### GRADINGS:

-  ... An easy stroll. Low level fitness required.
-  ... A good walk. Average fitness required.
-  ... A big hike. Good level of fitness required.

## FUN WITH FLAX



**COST:** \$5

**WHEN + WHERE:**

**11 January - 10am**

Glover St park  
Coromandel town

Have a go at flax weaving in this fun, hands-on class with an experienced weaver.

Learn all about harvesting and preparing flax. Then make your own creation to take home. Perfect for beginners. A great activity for 7 to 12 year olds.

## UP-CLOSE KIWI ENCOUNTERS



**COST:** **C** \$50 **A** \$80

**WHEN + WHERE:**

**7, 14 & 15 January - 9am**

Tangiaro Kiwi Retreat  
Port Charles

A 'once in a lifetime experience' to see a wild kiwi up-close in its natural environment. Join our kiwi handlers as they track and catch a kiwi for its 6 monthly health check.

These opportunities don't come up very often. Bring your camera for this incredible photo opportunity. Don't delay, numbers are limited and this activity books up fast!

Good level of fitness required as we will be hiking off trail in the bush. Not suitable for children under 7.

Made possible thanks to Tangiaro Kiwi Retreat.

## CUVIER ISLAND NATURE TOUR



**COST:** \$280 per person

**WHEN + WHERE:**

**19-20 & 20-21 February - 9am**

Meet at Whitianga DOC office,  
20 Joan Gaskell Drive, for  
quarantine check

**26-27 & 27-28 February**  
*(alternative dates in case of bad weather)*

A rare chance to experience all this island has to offer with an overnight guided stay.

Explore this predator-free paradise, home to saddlebacks, kakariki, tuatara & gecko. Learn about the island's fascinating history while enjoying a guided nature walk.

Spend the night and enjoy a home-cooked meal, surrounded by stunning views and some of our most rare and beautiful endangered species.

Enjoy the journey on a two hour scenic boat ride from Whitianga, returning by noon the next day. Book early as numbers are restricted!

Made possible thanks to the Department of Conservation.

*The Coromandel is 'real kiwi country'. Since we began stoat trapping in 2005 our kiwi population has grown by 36%. Help us keep kiwi safe*

### NOTE:

*Transferring to the island via an inflatable boat can be difficult. Patrons must be physically agile. We reserve the right to screen participants. Bring a change of clothes just in case you get wet. Patrons must meet strict quarantine requirements.*



## BOUNTY HUNTERS



**COST:** Gold coin donation

**WHEN + WHERE:**

**4 & 16 January - 10am**  
Driving Creek Railway  
Coromandel town

Help us track down some furry intruders that don't belong in the pest free Sanctuary at Driving Creek. A few pests are hidden somewhere within the pest-free enclosure.

Come and explore the sanctuary and try your luck at tracking down these little nasties. While in the sanctuary, discover the nocturnal world of kiwi in an interactive exhibit.

A great activity for the little-ones. Children must be accompanied by an adult.

## STARLIGHT CINEMA



**COST:** \$2

**WHEN + WHERE:**

**3 & 9 January - 7.30pm**  
Denton's Woolshed,  
Waikawau Bay

Watch a family classic on the big screen. Pack up a picnic, grab something to sit on and come down to the Woolshed for a magical night of outdoor cinema.

This unique movie experience is always a crowd favourite. Get there in plenty of time to claim your seat on the hale-bale grandstand.

## CABBAGE TREE FAMILY FUN RUN



**COST:** Gold coin Donation

**WHEN + WHERE:**

**3 January - 9am**  
*Race briefing*  
Little Bay Beach

Families, get your jog on! A great 3.5km course starting at Little Bay beach before racing up the headland to the cabbage tree.

Open to all ages and abilities. This is all about having a go. The fun run will be followed by sprint races, a tug of war and a lollie scramble for the kids.

## KIWI NIGHT ADVENTURE



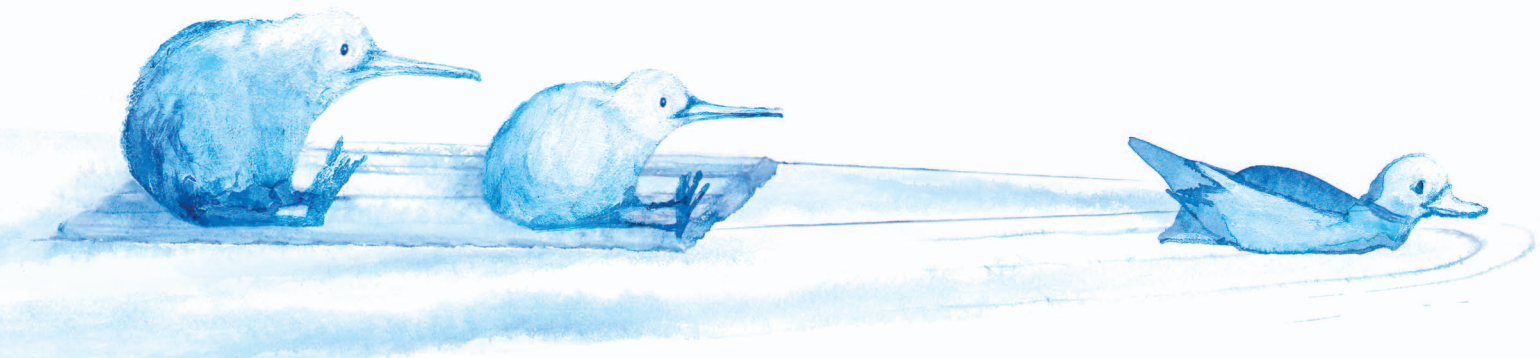
**COST:** **C** \$5 **A** \$10

**WHEN + WHERE:**

**3, 6, 12 & 21 January - 7:30pm**  
Port Charles Fire Station

Explore the forest at night time in real kiwi country. Hear kiwi call and see a kiwi nest.

Learn about our national bird and the work Moehau Environment Group and local residents are doing to save our kiwi. Bring a torch and sturdy shoes.



*Driving at night?  
Watch out for the  
endangered pateke, or  
brown teal on our roads,  
especially near wetlands.  
They don't have much  
road sense!*



## NOCTURNAL WALK



**COST:** C \$5 A \$10

**WHEN + WHERE:**

5, 6 & 20 January - 8.30pm  
Telephone Kiosk  
Waikawau Bay DOC Camp

Encounter the exciting nocturnal world of our forests and streams. Engage all your senses with this after dark tour of nature.

Bring a torch. Children must be accompanied by an adult. Numbers are limited so please book at the DOC camp office to reserve a spot.

*In 2009 the North Island robin was reintroduced to our area, after being regionally extinct for over 100 years! See if you can spot them at Stony Bay.*

## JUNIOR RANGERS



**COST:** C \$5 A Free!

**WHEN + WHERE:**

5 January – 9.30am  
Papa Aroha Camp office

6 January – 9.30am  
Long Bay Camp office

9 January – 9.30am  
Waikawau Bay Camp office

Become a bush detective and search for clues left by native animals that live in the bush. We'll be doing a range of activities to inspire, inform and enthuse kids about our unique plants and animals.

Good fun for the kids. For 7 to 12 year olds (children 8 and under must be accompanied by an adult).

## MEET A GECKO



**COST:** C \$5 A \$10

**WHEN + WHERE:**

7 & 13 January – 11am  
Driving Creek Railway

Get to see and hold real live geckos. Encounter the exciting world of geckos with lizard expert Doug Ashby. Hear Doug share his knowledge of gecko and talk about his experience as a gecko keeper.

While in the pest-free Sanctuary, check out the family of endangered pateke ducks, kiwi exhibit and other native wildlife benefiting from the Sanctuary's predator proof fence.

Suitable for all ages. Children must be accompanied by an adult.

## TEACH YOUR DOG TO AVOID KIWI



**COST:** Free!

**WHEN + WHERE:**

5 Jan - Waikawau Bay - 9am  
Call 07 8679080 to book

9 Jan - Thames Coast - 8:30am  
Call 07 868 9912 or  
027 235 8424 to book

16 Jan - Tairua - 9am  
Call 07 868 9912 or  
027 235 8424 to book

**If you spend time near the bush please get your dog kiwi trained. Training is free and only takes 10 minutes. Bookings are essential.**

Dogs are the biggest threat to adult kiwi in our area. Any dog can kill kiwi. In fact, smaller breeds like terriers are the most likely offenders. Kiwi have no chance against any dog.

These sessions are run as a partnership between the Department of Conservation and Coromandel kiwi protection groups. Help us keep kiwi safe this summer.

If you've had your dogs trained, well done! However repeating the training once a year is recommended.



## BOOKINGS + CANCELLATIONS

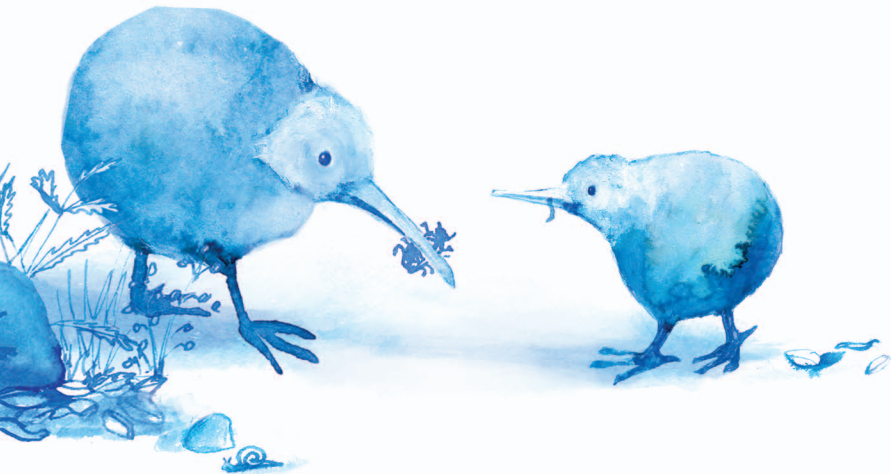
Bookings are essential as some activities may not run without a minimum number of people. To book call 07 866 6903. For Waikawau Bay activities, campers can also book at the DOC camp office.

Cancellations must be made 48hrs prior to trip departure. MEG reserves the right to cancel trips due to bad weather, insufficient patronage, fire or other emergencies and any other unforeseen circumstances.

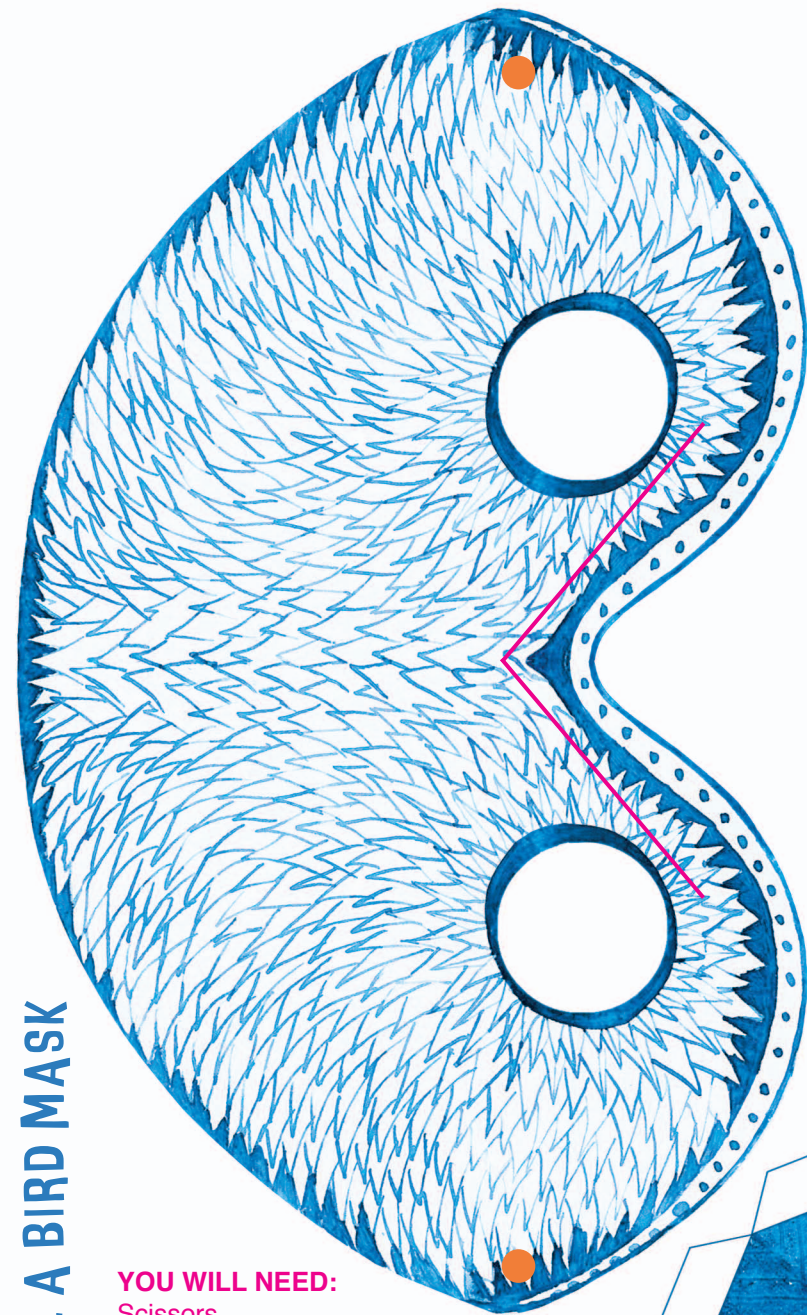
MEG may decide to cancel a trip just before departure time and we apologise for this. If a decision is made early enough details will be broadcast on our website [meg.org.nz](http://meg.org.nz) and Coromandel FM.

Please leave a phone number if possible when you book. Full refunds will be issued in late January if a trip is cancelled by MEG.

**For more info and to book phone...  
07 866 6903 (Terry Whitehouse)**



## MAKE A BIRD MASK

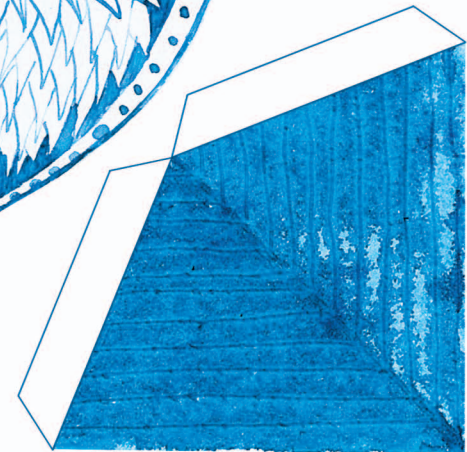


### YOU WILL NEED:

- Scissors
- Glue
- Elastic or string
- Stapler
- Masking tape

**METHOD:** Cut out the mask, beak and holes for eyes. Next, fold the beak down the middle, fold back and glue tabs to the mask along the pink lines.

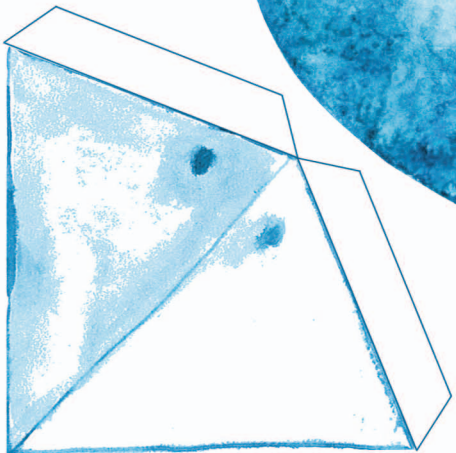
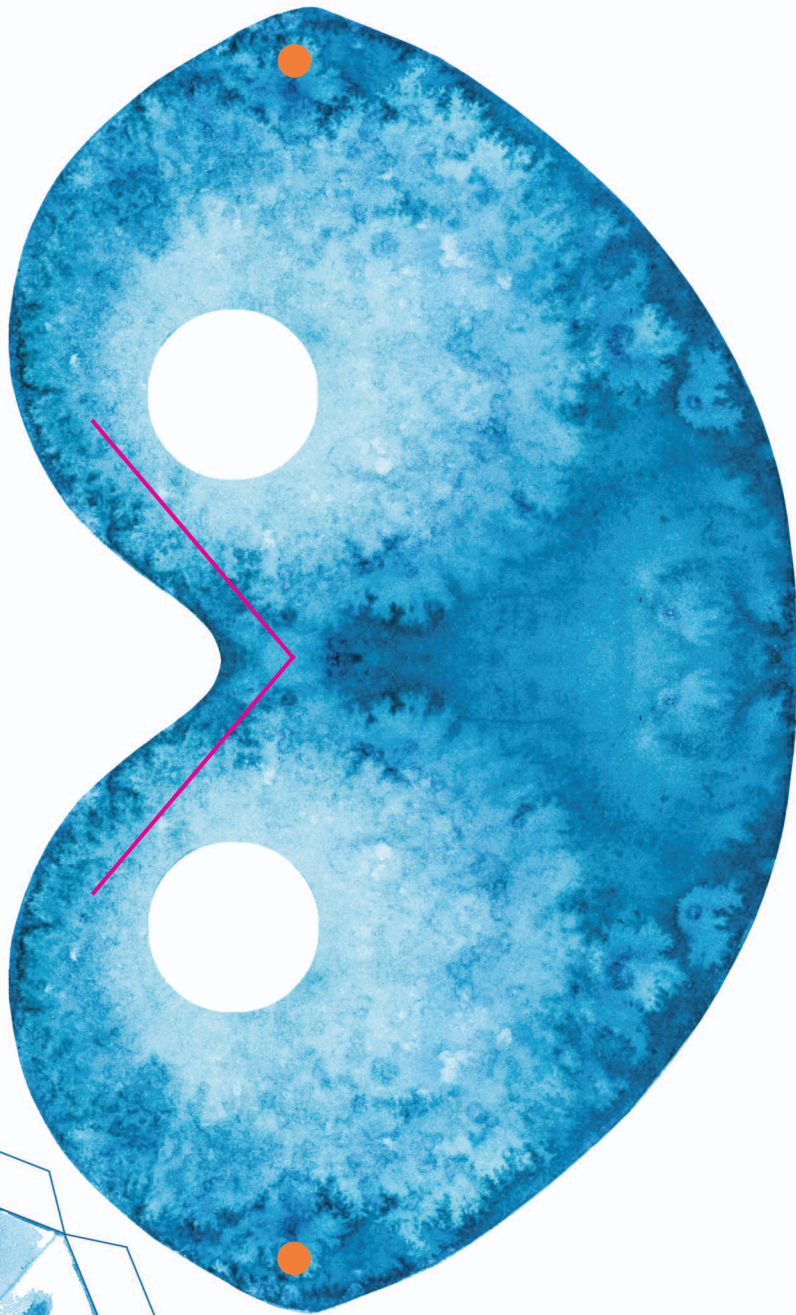
To make your mask ready to wear, staple some elastic or string on each side by the dots. Put masking tape over your staples on the back. Tie the string to fit your head and your mask is good to go!





This mask has two sides ... pick the one you like best!

## MAKE A BIRD MASK



## WHO ARE WE?

**Moehau Environment Group is a non-profit volunteer organisation dedicated to the protection and enhancement of the natural environment on the Coromandel Peninsula.**

Our vision is to become the largest open sanctuary in New Zealand - a remote coastal landscape where people live, work and holiday; wetlands and forests regenerate; the bird-song is deafening; and treasured species thrive.

Formed in 2000, we currently have over 100 members, mostly locals, landowners and others keen to see the area once again alive with the sounds and sights of native wildlife.

We partner closely with over 430 landowners, other community conservation groups, the Department of Conservation, Waikato Regional Council, local schools and Iwi to achieve landscape-scale pest control on the Coromandel.

We now have habitat restoration projects covering over 13,000 hectares, primarily on private land. This has allowed for the recovery of many endangered species in the Northern Coromandel including dramatic turnarounds for kiwi, fernbirds, bittern, kaka, and spotless crane.

The hard work of our volunteers and members has allowed for the successful reintroduction of the North Island robin and pateke (brown teal), with both species now successfully breeding in the area.

For more about us visit [meg.org.nz](http://meg.org.nz)

**Become a member today and help us protect the beautiful Coromandel.**



## LIKE TO SUPPORT OUR WORK?

### Join Us...

By becoming a member of Moehau Environment Group you are directly helping to protect the unique species & ecosystems on the Coromandel Peninsula. Members also receive our quarterly newsletter and priority bookings on summer holiday programme activities. Subs are only \$10 per person, \$20 per family or from \$250 for Corporates. We can't do this without your support, so thank you!

---

### MAKE A DONATION...

To make a credit card donation go to [meg.org.nz](http://meg.org.nz). You can also donate online through internet banking. Our BNZ account is 02-0304-0342229-02

---

### VISIT OUR ONLINE SHOP...

Our Online Shop raises funds to support conservation projects in the Northern Coromandel. Every cent of profit from any items purchased goes directly towards protecting biodiversity.

Check out [meg.org.nz](http://meg.org.nz) to view our range of items - T-shirts, fridge magnets, gift cards and more [meg.org.nz/support-us/shop](http://meg.org.nz/support-us/shop)

---

### BE OUR FRIEND ON FACEBOOK...

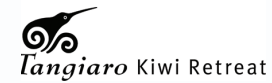
Like Moehau Environment Group to help spread the word!

## A BIG THANKS TO...

Our Moehau Environment Group volunteers who lead Summer Programme activities.

---

The Department of Conservation and Tangiaro Kiwi Retreat who we work in partnership with for some events.



Print House who sponsor the printing of this programme. Print House is committed to sustainability and the protection of the environment. This booklet is printed using Forest Stewardship Council certified paper.



Miriam Silvester, a talented Wellington artist who has generously donated her time to illustrate and design this booklet. [miriamsilvester.blogspot.co.nz](http://miriamsilvester.blogspot.co.nz)





# KEY DATES:

<b>JAN 2016</b>	
<b>3</b>	<b>Family Fun Run, Little Bay</b> <b>Starlight Cinema, Waikawau Bay</b> <b>Kiwi Night Adventure, Port Charles</b>
<b>4</b>	<b>Bounty Hunters, Coromandel town</b>
<b>5</b>	<b>Junior Rangers, Papa Aroha</b> <b>Teach Your Dog to Avoid Kiwi, Waikawau Bay</b> <b>Nocturnal Walk, Waikawau Bay</b>
<b>6</b>	<b>Junior Rangers, Long Bay</b> <b>Nocturnal Walk, Waikawau Bay</b> <b>Kiwi Night Adventure, Port Charles</b>
<b>7</b>	<b>Up-close Kiwi Encounter, Port Charles</b> <b>Meet a Gecko, Coromandel town</b>
<b>9</b>	<b>Junior Rangers, Waikawau Bay</b> <b>Starlight Cinema, Waikawau Bay</b> <b>Teach Your Dog to Avoid Kiwi, Thames Coast</b>
<b>11</b>	<b>Fun with Flax, Coromandel town</b>
<b>12</b>	<b>Kiwi Night Adventure, Port Charles</b>
<b>13</b>	<b>Meet a Gecko, Coromandel town</b>
<b>14</b>	<b>Up-close Kiwi Encounter, Port Charles</b>
<b>15</b>	<b>Up-close Kiwi Encounter, Port Charles</b>
<b>16</b>	<b>Bounty Hunters, Coromandel town</b> <b>Teach Your Dog to Avoid Kiwi, Tairua</b>
<b>20</b>	<b>Nocturnal Walk, Waikawau Bay</b>
<b>21</b>	<b>Kiwi Night Adventure, Port Charles</b>
<b>FEB 2016</b>	
<b>19-20</b>	<b>Cuvier Island Nature Tour, Whitianga</b>
<b>20-21</b>	<b>Cuvier Island Nature Tour, Whitianga</b>



For more info &  
to book phone:

**07 866 6903**  
**Terry Whitehouse**